

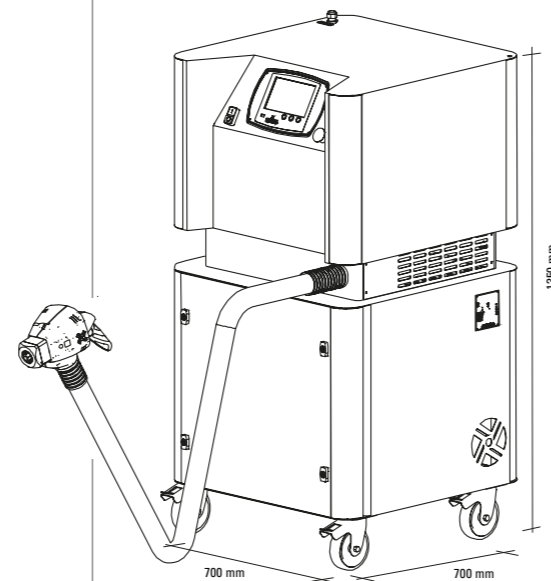
Certus

Technical data sheet

Number of charging fillers	1
Metering device	Volumetric dosing cylinder with single effect up to 2
Length of the fillers	3.5 meters <i>(others on request)</i>
Programmable cycles number	200 <i>(more on request)</i>
Programmable barcodes number	1000 <i>(more on request)</i>
Measurement units	
Weight	g , oz
Vacuum	Pa , μHg, mbar
Pressure	kPa , psi, bar
Temperature	°C , °F
Time	s
Vacuum pump	Double stage, 18 m ³ /h
Pump final vacuum	<1x10 ⁻² Pa (1x10 ⁻⁴ mbar)
Dimensions (H x W x P)	1350 x 700 x 700 mm
Weight	224 kg <i>(model C12)</i>
Work temperature	+0 ÷ +50 °C
Storage temperature	-25 ÷ +70 °C
Electric supply tension	230-400 V 50 Hz 3 ph <i>(other on request)</i>
Power consumption	900 W
Connection type to the group	¼" Hansen <i>(other on request)</i>
Compressed Air	600 ÷ 800 kPa (6 ÷ 8 bar)
Noise Level	< 70 dB (A)
Refrigerants	HC, HCFC, HFC
Refrigerant supply pressure	1000 ÷ 2300 kPa <i>(according to refrigerant type)</i>
Programmable Charge	10 ÷ 99999 g
Minimum charging increase	0.1 g
Accuracy (HC)	± 0.5 g for charges < 100 g ± 0.5 % for charges > 100 g
Accuracy (HFC)	± 1.0 g for charges < 200 g ± 0.5 % for charges > 200 g
Charge speed (HC)	Up to 25 g/s
(HFC)	Up to 45 g/s
Data visualization	Color touch screen LCD7"
Interfaces	RS-232 for bar code reader RS-232 for printer/PC RS-485 Ethernet communication for download data

Available models

Model	Number of fillers	Number of dosing cylinders
Certus 11	1	1
Certus 12	1	2



4 / 2015

creative solutions for customer's success

Certus

Automatic evacuating
and refrigerant
charging equipment
for flammable gases



GALILEO TP
PROCESS EQUIPMENT

Galileo TP Process Equipment S.r.l.
ph. (+39) 055 722 13 58 - fax (+39) 055 722 22 25
Via del Pantano, 73 • 50018 Scandicci
Florence • Italy
sales@galileotp.com • www.galileotp.com



GALILEO TP
PROCESS EQUIPMENT

Certus

F l e x i b l e a n d S a f e

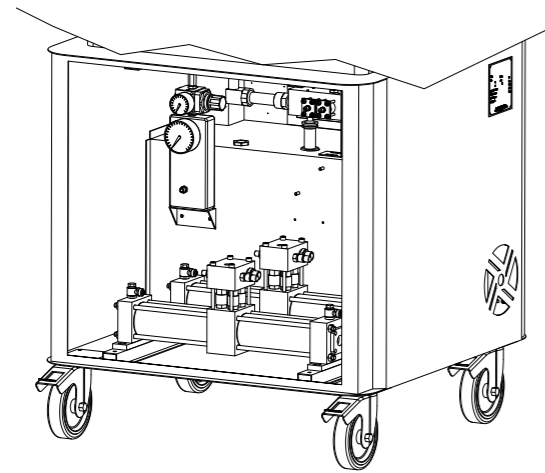


The flexible and safe refrigerant charging system for flammable gases into the HVACR market. Particularly indicated for small/medium production rates for both flammable and non flammable gases. The machine automatically performs circuit evacuation, vacuum check, leak test and refrigerant charge using a self diagnostic system.

Flexible

Certus guarantees a very flexible use and more advantages: **the customer can charge flammable gases even without the help of a transfer pump**, but directly connected to a refrigerant tank, located just behind the machine. The above mentioned configuration is possible thanks to the **GDC TECHNOLOGY**, the uncontested Galileo Dosing Cylinder metering device that may work even as a transfer pump and that grants the customer:

- The best reliability
- The most accurate dose
- The highest safety standard and detection of uncondensable gas
- Zero maintenance



The Cobra E Filler Gun

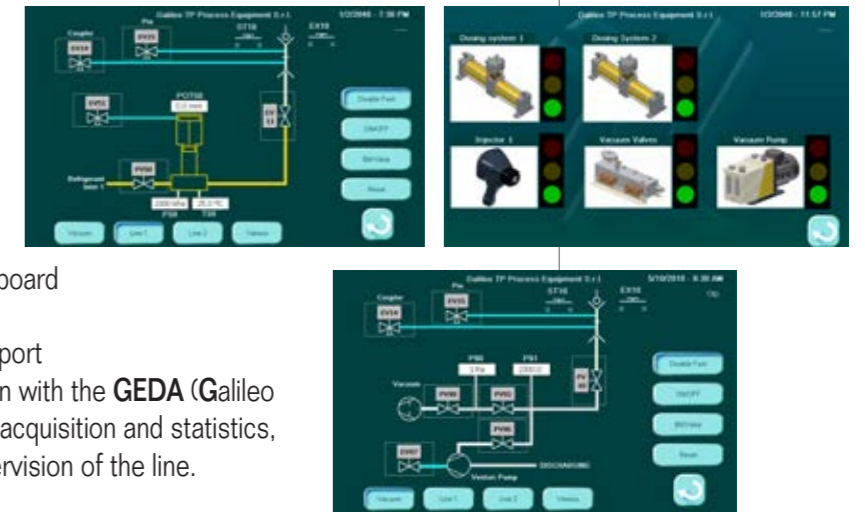
Advanced filler gun allowing customers to work in the safest possible conditions with **zero gas release upon disconnection**, therefore adding further safety to the zone. More important features as to include:

- easy to reverse to overhead position
- valves' protection shield
- very easy disassembling and maintenance
- **It can manage up to two gases with only one filler gun!**



Icon User Interface

Capacitive color touch screen LCD 7" high brightness designed for industrial environment with extreme temperatures and high humidity. Durable, dirt-resistant and very responsive. The machine also features a new Galileo PC board with an updated interface **IUI 2015**, a very user friendly icons menu and Ethernet port. The **Certus** comes with a complete integration with the **GEDA (Galileo Equipment Data Acquisition)** system for data acquisition and statistics, remote programming as well as external supervision of the line.



Certus complies with European standards and it is certified by TUV



GALILEO TP
PROCESS EQUIPMENT